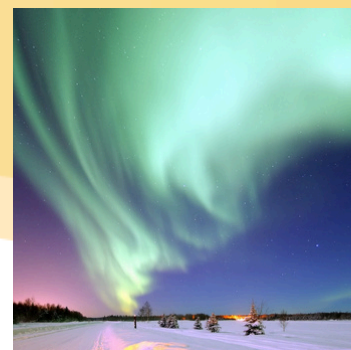
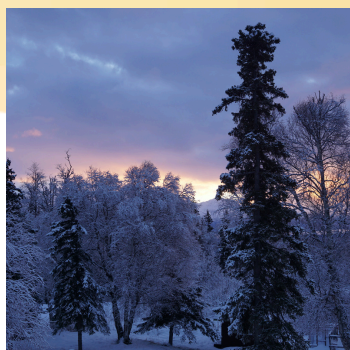




COMMUNITY CONNECTION



A Look Back at 2024

Last year, the Palmer Community Foundation (PCF) worked to strengthen our community by supporting local organizations doing important work in our region. During our 2024 grant cycle, we received 17 grant applications requesting over \$67,000. Thanks to the generosity of our supporters, we awarded \$15,000 to seven organizations. Thank you to the donors who help us grow our endowments and for the continued support from The Alaska Community Foundation, the Rasmuson Foundation, Mat-Su Health Foundation, and Mat Valley Federal Credit Union.

Because of our generous supporters, PCF added \$72,100 to our foundation funds, bringing our grantmaking endowment to \$385,356 and our operating endowment to \$430,831. In addition to the funds raised, PCF hosted a Foraker Board Development workshop at no cost to attendees from 19 local organizations. We also hosted our first-ever Chili Cook-Off during Colony Days and our second Swing into Summer family dance! We look forward to the connections, grants, events, and possibilities in 2025. Thank you to all our donors, partners, and supporters who make this work possible!

We are proud to highlight the projects we supported through our grant program. These grants reflect the heart and dedication of our community working together to improve the lives of our friends and neighbors.

2024 Grant Recipients

Daybreak, Inc - \$3,980

The Palmer Community Navigation Center provides resources and assistance to those struggling with mental illness and homelessness in the Palmer area, promoting self-sufficiency and independence. Grant funds from PCF supported client transportation needs and provided reflective road-safety backpacks.

Matsu Valley Rebuild - \$2,500

Matsu Valley Rebuild used grant funds to build a community garden at their location on the Palmer-Wasilla Highway. The garden provides planting space for the community, gardening education, and access to healthy food.

Valley Quilts of Valor - \$2,650

Valley Quilts of Valor provides between 50 to 100 quilts annually. The grant from PCF helped purchase quilting supplies to provide handmade, heirloom-quality quilts to our local veterans and service members.

Palmer Little League - \$2,570

Grant funds from PCF helped the Palmer Little League purchase new scoreboards for the 2024 season. The Palmer Little League provides opportunities for children ages four through eighteen to participate in team sports, experience volunteerism, and develop leadership and teamwork skills.

Grant Recipients *continued*

Covenant Youth of Alaska - \$1,700

Chickaloon Retreat Center expanded its housing capacity by building more yurts. Grant funds from PCF helped build three ADA-compliant platforms, increasing the capacity of their overnight youth programs from 20 to 50 participants.

American Red Cross - \$1,000

The Sound the Alarm program supplied 50 fire alarms to low-income families and collaborated with local organizations to provide fire safety education.

Valley Community for Recycling - \$600

Grant funds from PCF were used to purchase recycling bins for community events. The bins are available to the public to encourage recycling at large gatherings and events.

2025 Competitive Grant Program

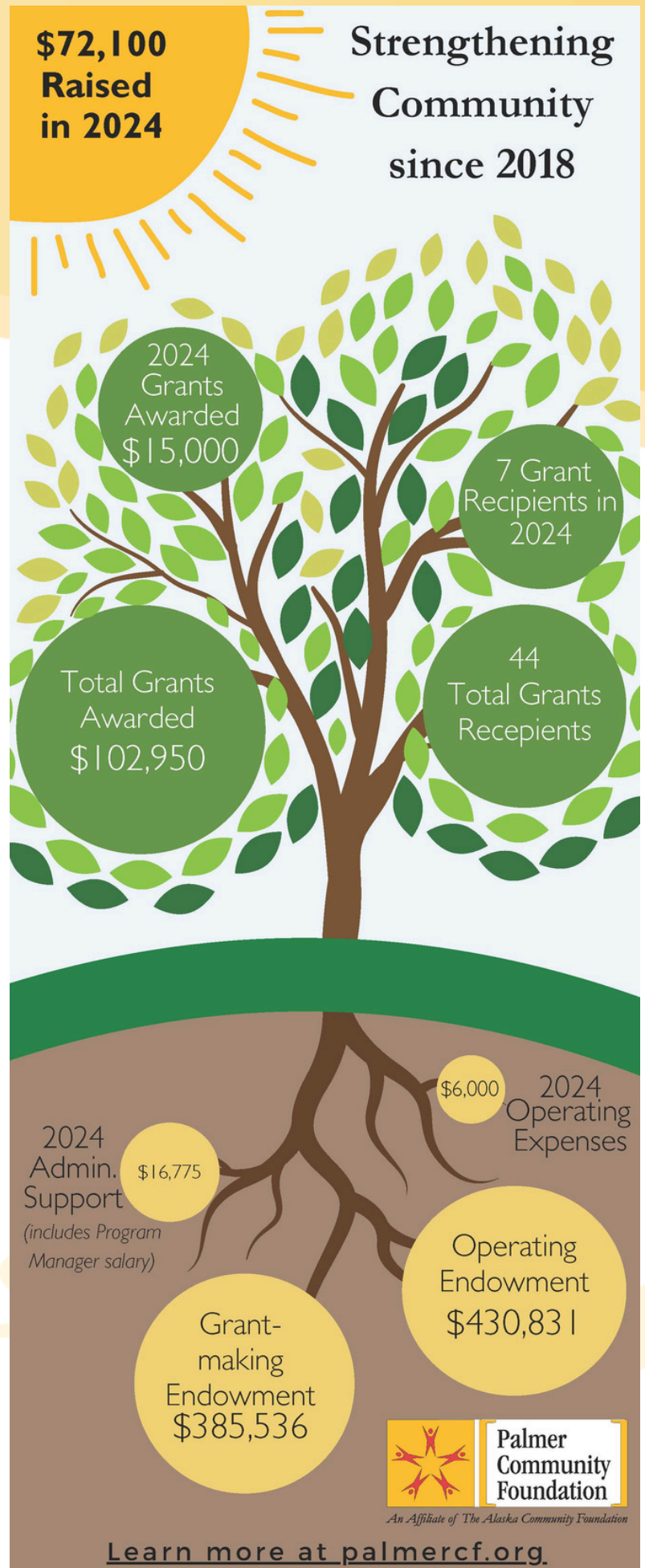
Does your nonprofit have a project that just needs a little financial boost?

Palmer Community Foundation's 2025 competitive grant cycle opens on March 1 and closes at 5 PM on March 31. We are thrilled to announce that we will be able to award a total of \$20,000 in 2025.

Each year, we garner a portion of the earnings from the PCF grant endowment fund to support local organizations that work to improve life in our area. Grants normally range from \$500 to \$5,000, with an average grant size of \$2,500. Your donations help us offer more and more support to our community each year.

For more information and to view past awardees, visit our website: <https://palmercf.org>.

Support
nonprofits in
our community
with a gift to
PCF



UPCOMING EVENTS:

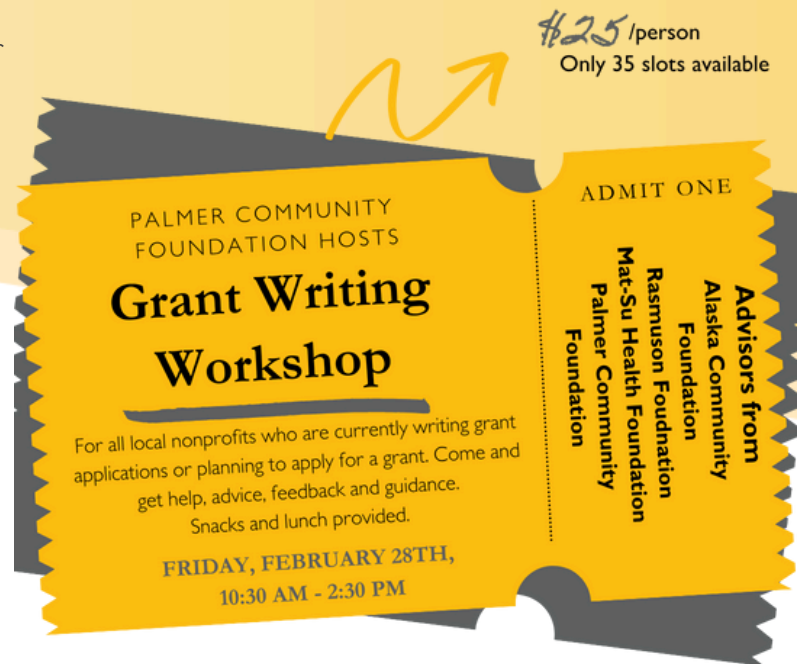
Palmer Community Foundation is excited to announce our **Grant Writing Workshop** at Mat-Su College on **February 28th, 2025 from 10:30am - 2:30pm.**

Representatives from several key grant funders will be available to assist local nonprofits with their grant applications. Join us to receive direct feedback from The Alaska Community Foundation, Rasmuson Foundation, Mat-Su Health Foundation, and Palmer Community Foundation. This valuable opportunity will provide insights from professionals who understand the intricacies of the grant process.

The workshop will feature roundtable discussions and peer review of your in-progress application. Our goal is for grant writers to walk away with applications that are ready to submit! This personalized advice will help you strengthen your proposals and improve your chances of success.

This workshop costs \$25 per person, and snacks and lunch will be provided. Register today at: <https://palmercf.org>. Your registration will be confirmed once payment is received. Be sure to secure your spot early as space is limited.

Don't Forget to
Pick.Click.Give.
when you apply
for your PFD!



Register at <https://palmercf.org/2025/02/05/grantworkshop/>
Registration is only guaranteed once payment is received.

The **2025 Palmer Community Foundation grant cycle** opens **March 1, 2025**, with grants awarded in late April. Learn more at palmercf.org/grants.

Mark your calendars for our **Annual Chili Cook-Off and Swing Into Summer** event at Colony Days, **June 14, 2025**. Join us for a swinging good time and enjoy some amazing chili! This free, family-friendly event is a great excuse to dust off your dance shoes and sample delicious home-cooked chili.

Think your chili could be a fan favorite? We'd love for you to enter the cook-off! Registration information will be posted in early May, so keep an eye out

Do you own a business? Now you can support our community's philanthropic legacy through a **Business Sponsorship** of Palmer Community Foundation. As a sponsor, your business will benefit from increased visibility through PCF social media and newsletter shoutouts, logo and business link placements on our website, and more. If you are interested, please reach out to us at palmer@alaskacf.org. All sponsorships are tax deductible

Palmer Community Foundation

PO Box 1241

Palmer, AK, 99645

www.palmercf.org | palmer@alaskacf.org

Advisory Board

Ashley Kincaid, Board Chair
Saunders McNeill, Vice Chair
Mike Liebing, Treasurer
Erin Dwyer, Secretary
Patricia Chesbro
Jim Cooper
Debby Retherford
Paul Whitmore



Join our Advisory Board

Are you interested in making Palmer a better place to live, work, and play? Consider joining the Palmer Community Foundation Advisory Board! We need people who have connections to the community, care about the future, and want to give something back. Apply for a seat on the PCF Advisory Board today to get involved.

LEARN MORE ON OUR WEBSITE
palmercf.org/advisory-board